

Caregiver Supports Project

Project Update Presentation

November 30, 2023

www.dcyf.wa.gov



Washington State Department of
CHILDREN, YOUTH & FAMILIES

Welcome

- **Caregiver Supports Project:** Implement a continuum of placement resources that enable safe, stable, and supported placements for children and youth in foster care.
- Part of the [Thriving Families campaign](#).
- Today's presentation
 - Project history and background



Caregiver Supports Project Background

- Rate Study May 2018-October 2019 leads to recommendation to review rate assessment process
 - Rates are insufficient
 - Significant gap between Level 4 and BRS
- August 2019 completed evaluation of the Foster Care Rate Assessment Tool
 - Lack of sensitivity
 - Subjective
- Developed proposal for Caregiver Supports Project to start, 1/1/2020



Current System Pain Points

- Current rate assessment process is 20 years old and needs to be reviewed and modified
- Current process is subjective and not transparent
 - Reliability is difficult to establish without objectivity
 - Unfair
 - Caregiver time spent caring for a child does not identify a child's needs
 - Cannot evaluate systemic bias
- The current process does not identify a child's needs
 - Hard to link caregivers with supports for the child's needs
 - Cannot focus recruitment efforts on meeting needs of children in care
 - Difficult to develop contracted resources structured to support caregivers in caring for children
- Substantial gap between BRS and foster care basic (82%)
 - Risk of kids failing up into more intensive services
- Resource inequity for kinship caregivers

Caregiver Supports Project Goals

- Create a transparent and data-driven payment methodology for reimbursement
- Make resources available at the time of placement
- Identify caregiver skills and abilities that can meet needs of all foster children
- Resources based on needs of children and youth, serves diverse population all the way up to BRS needs
- Increase placement stability
- Continuous array of placement supports that collaborate with other child-serving systems
- Create mechanisms for evaluating resource allocation inequity and system bias to be able to effectively reduce it
- Clear definition of services needed and service level expectations from contracted providers
- Parity in resource support



Developing the Caregiver Supports Project

- DCYF relied on the expertise and input of many different partners to develop the framework for the Caregiver Supports Project
 - Foster Care Alumni
 - Regional meetings with DCYF staff
 - Foster Parents, including CPA licensed and state-licensed
 - Kinship Caregivers
 - Child Welfare Service Providers
 - Foster Parents Focus groups: BIPOC, Youth with high needs
 - Allied Services such as Public Mental Health Service, Apple Health / Coordinate Care
 - Tribal Partners
 - Kinship Advisory Committee
 - Legal Child Advocates, Office of Public Defense, Office of the Attorney General
- Recommendations Workgroup (Jan – Sept 2021)
 - DCYF staff, kinship caregiver, foster parent, two CPA staff
- Project Information sessions where DCYF presented results of recommendation workgroup in many different forums
 - 1624 meetings, ICW meetings, open meetings inviting listserv distribution, revisited stakeholder groups above
- DCYF project implementation team
 - Fiscal, Program, Regions / Field Ops, Recruitment & Retention, Licensing, Office of Tribal Relations



Project Timeline

Project Start
Jan 2020

Workgroup
1/1/2021 –
Sept 2021

RDA Report
Dec 2021

**Stakeholder
Presentations
& Input**
Jan – July 22


Submit DP
Sept 2022

**Project
Planning**
Sept 2022 –
April 2023

DP Approved
May 2023

Implementation
May 2023 – Dec
2023

**Phase 1 Go-
Live**
Jan 2024

 = where we are today

2020

2021

2022

2023

2024



DSHS Research and Data Analysis Division

RDA provides high-quality data analysis to **inform policy conversations**, and support research activities by sharing subject matter expertise and providing secure access to data to authorized external research partners. Our analyses are **sophisticated and trustworthy**—built on statistical standards and research methods.

Policy Analyses • Program Evaluation • Predictive Modeling • Performance Measurement • Geographic and Community Risk • Client, Customer, and Employee Surveys



Getty Images, iStock

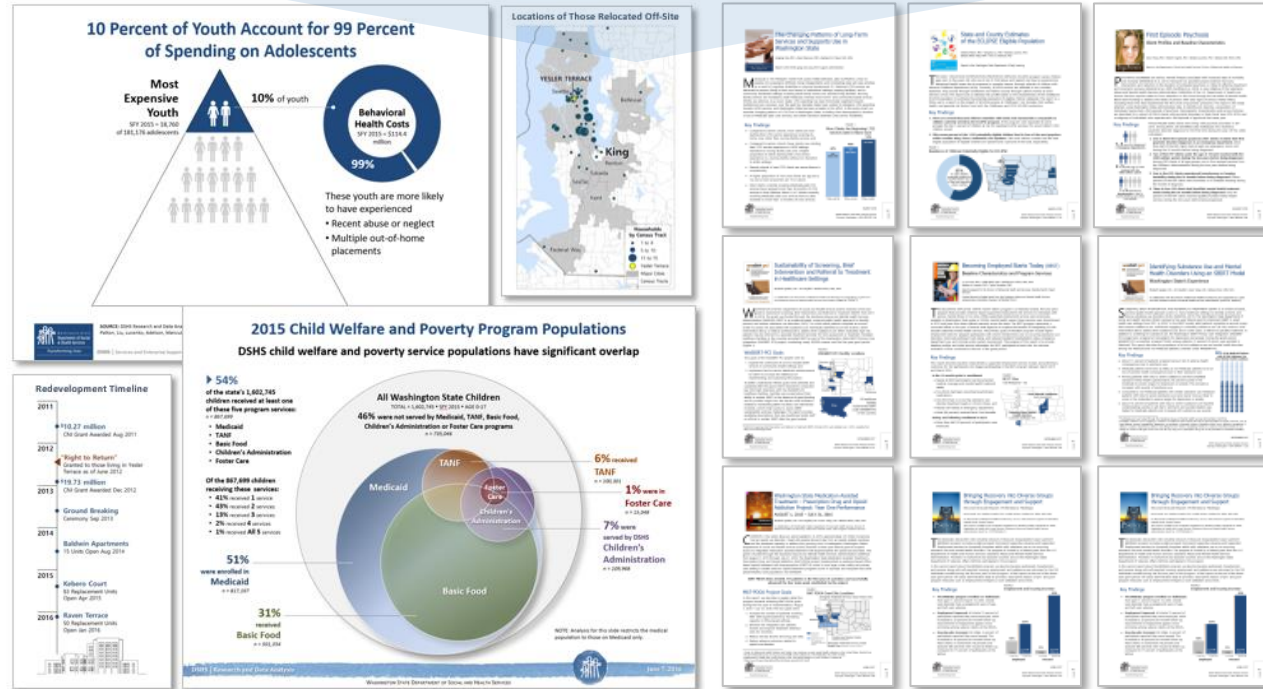
WASHINGTON STATE
Office of the Governor
Jay Inslee, Governor



DEPARTMENT OF
Social & Health Services
Jilma Meneses, Secretary

Facilities, Finance, and Analytics Administration

Research and Data Analysis Division (RDA)



Our analyses reach Program Managers • Local Planners • State Legislature • Federal Government • Universities • Other State Agencies • Case Workers



Photos from Getty Images/Stock

Informing the Placement Continuum

- DCYF contracted with DSHS Research and Data Analysis (RDA) to research the needs of children at the time of placement into out-of-home care
 - Medical claims and administrative data for 25,638 children who were in care from 2015 to 2018
 - Analyzed how observed variables cluster together in order to identify subgroups within a population
- RDA Research report available at [research-7-124.pdf \(wa.gov\)](#)
- RDA findings informed the current model that identifies 7 distinct categories of support needs

Caregiver Supports Model

Project Website: <https://www.dcyf.wa.gov/services/foster-parenting/caregiver-supports-project>

	LEVEL 1	LEVEL 2	LEVEL 3	LEVEL 4	LEVEL 5	LEVEL 6	LEVEL 7
New Support Levels	Basic Maintenance Foster Care	Support Needs: Adolescent Low Needs	Support Needs: Chronic Physical Health	Support Needs: Developmental Disability	Support Needs: Developmental Disability & Chronic Physical Health	Support Needs: Moderate Mental Health	Support Needs: Complex Mental Health
Placement Supports for Licensed and Unlicensed Caregivers – includes Case Aides for levels 3-7							
Rates for Caregiver Support Levels Based on Age (Licensed Caregivers) – Level Rates include Basic							
Age: 0-5	\$722	N/A	\$1,407	\$1,749.50	\$2,092	\$2,434.50	\$2,777
Age: 6-11	\$846	N/A	\$1,531	\$1,873.50	\$2,216	\$2,558.50	\$2,901
Age: 12+	\$860	\$1,202.50	\$1,545	\$1,887.50	\$2,230	\$2,572.50	\$2,915

Upcoming Communications

- Check out the project website for up-to-date information:
<https://www.dcyf.wa.gov/services/foster-parenting/caregiver-supports-project>
- Visit the [DCYF Rules Filing](#) page for information about WAC changes (see Foster Care Rate Assessment)
- Caregiver Supports Contract RFI open until December 7, 2023 on WEBS site
<https://pr-webs-vendor.des.wa.gov/home.html>
- Caregiver Connections messages
- Thriving Families communications
- Pre-recorded project update webinars will be posted on the Caregiver Supports Project website on the last Thursday of each month
 - December 28th



Tribal Engagement

- Tribes have the option to do their own rate assessments on tribally dependent children (Phase 1) and to provide placement supports to their own members instead of using a contracted provider in their catchment area (Phase 2)
- DCYF will engage in a formal consultation with Tribes to determine project impacts and engage Tribes in project implementation
 - Roundtables were held on November 14th and November 28th
 - Consultation on Dec. 12, 2023 from 2 - 4 p.m
 - For more information about the Tribal Consultation, email the Office of Tribal Relations at tribalrelations@dcyf.wa.gov.
- If you would like to meet with DCYF to discuss the Caregiver Supports Project and impacts to your Tribe, email Mandy Morlin at mandy.morlin@dcyf.wa.gov
- View the Caregiver Supports Project Presentation for Tribes on the [project website](#)



Thank you!

Please send all questions and comments to: DCYF.CaregiverSupports@dcyf.wa.gov

