

STRENGTHEN FAMILIES LOCALLY

2/25/21

In attendance:

Becca Larsen, Vashti White, Minnie Whalen, Shawnda Hicks, Tom Stokes, Colleen Studinarz, Amanda Sanders, Nita Lynn, Erinn Havig, Joy Lile

Important documents:

SFL onboarding document:

<https://dcyf.box.com/s/pirdixemujfr1hw75gj3bp0enhebg1c4>

Port Angeles/Sequim Project Overview:

<https://dcyf.box.com/s/b9282wgcg6k6dzajt9nmgv9e249iw5ot>

DCYF Data Review Meeting (1/14/21):

<https://dcyf.box.com/s/mtb8ne23zeujf7j460ozewymfzagy9wy>

Citizen Journalist Workshop materials:

<https://dcyf.box.com/s/l6qxee9vk4xjk3gjl3wf06li79wqsz0>

Sensemaker FAQ document: (Check here for social media post/email wording)

<https://dcyf.box.com/s/mqkijghhd9x6u7ilsz8n5igg0d57nfey>

Next meeting: 3/11

Topic: Community planning - aligned efforts - continued

What strategies and objectives are other agencies/collaboratives pursuing related to our goals?

How do they overlap with our ideas, and how might we braid strategies together?

(Bring your thoughts!)

“Sensemaking” follow up:

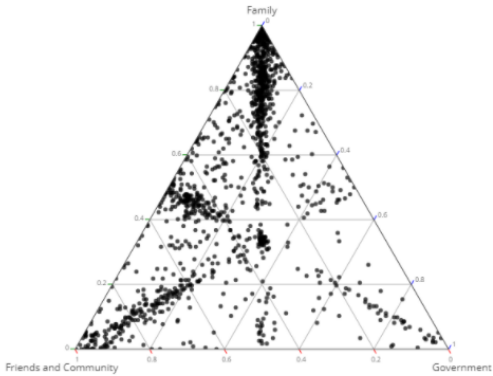
- Sensemaker FAQ document has information about the project
- When we get stories, we will have a visual representation of the data like this:



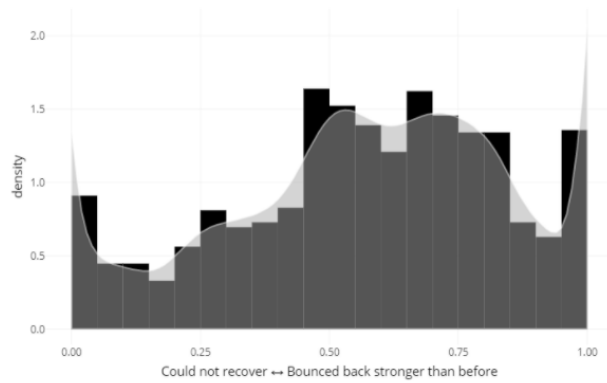
Washington State Department of
CHILDREN, YOUTH & FAMILIES

Sensemaking: Example

Triangles example:



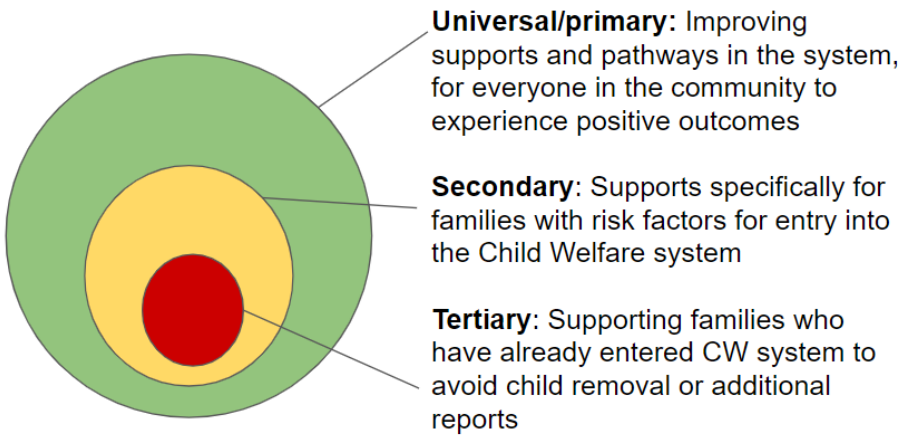
Family Resilience Example:



- Can be divided and compared between race, economic level, gender, geographics
- Also, can look at a quadrant of the graph and see who is more likely to answer that way

What do we mean by Prevention? Reminder:

What do we mean by prevention?



Aligned Efforts: Reducing Child Abuse and Foster Care Entry

Universal efforts:

Original Date: 2/25/21
Family Support Programs Division

- Technology:
 - o PASD - myfi hotspots
 - o Library system - free wifi and kits
- Americorps tutors at district
- Quileute tribe - connecting families together for transportation to PA
- Maternity Support Services - to increase healthy relationship and bonding (Health care oriented and healthy start)
- Lutheran Community Services - universally offered family education programs - high motivation to be there
 - o LCS - developmental screenings (Child Check) - 18 mos-3 years - can receive supports for other needs once they are in the program
- First Steps
 - o supportive staff to help fill out paperwork for subsidies
 - o Safe Sleep and Car Seats
 - o Kaleidoscope Play & Learn Groups
 - o
- Prevention Works listserv
- TVR - Elwha program for employment support

Secondary efforts:

- PASD:
 - o Concrete supports from school - school family resource coordinator - basic and health needs
 - o School provided meals to all students
 - o Home visits for students not engaging in school - work with counselors/teachers weekly
 - o PASD partnership with NOHN (North Olympic Health) to provide mental health services to students. – clinic on campus 1x weekly, transportation
 - o
- Quileute tribe
 - o able to buy cell-phone minutes and cards and referring families to the NOLS free wifi
 - o family fun packs to help relieve stressful situations
- ECEAP and Head Start Programs and the parent nights
- Lower Elwha Klallam:
 - o Food banks
 - o Healthy Transitions - mental health youth aged 15-25
 - o Housing resources
 - o Positive Indian Parenting
 - o
- First Step - families with young children (0-7 ish)
 - o Parent Education Services with childcare
 - o Reach out Program - meeting families specific needs
 - o First Books
 - o Perinatal Support Groups
 - o Summer Adventure
 - o Home visiting services - NFP and PAT and Supported Parenting Program
 - o Promoting First Relationships

Original Date: 2/25/21
Family Support Programs Division

- Jamestown S'klallam: family needs assessment and case management
- TANF youth advocate for tutoring, etc (*what program?*)

Tertiary efforts:

- Family Assessment Response (FAR) - concrete supports to families as well. Reducing re-referral
- PCAP for families involved in CPS.
- Olympic Angels – case management and concrete supports for foster youth and families

First Step Family Support Center shared the following graphic:

FIRST STEP FAMILY SUPPORT CENTER

Two-Generation, Multi-Method, Multi-Modal Approach to Prevention-Based Services for North Olympic Peninsula Families



Identified Gaps/Opportunities:

- Collaborate with the tribes in case you have concerns with Native families or receive referrals. All on the same page with wraparound services

Original Date: 2/25/21
Family Support Programs Division

- Because of COVID - we have families who are suffering - more families who might be at risk than what we have a net to capture
- General daycare options in the community
- Parent to Parent Mentor Program
- Respite Care for parents to have a break
- Provide activities for kids so parents can have a break and kids can do something fun/safe
- Infant mental Health Services
- Quileute - helping clients get re-certified for food stamps - dropped families when children were not in school
- Therapeutic/respice child care supports for families/youth
- Quileute - connections and supports for tribal members who live in PA - how to connect them with referrals and services
- Critical thinking and problem solving skills - kids are missing while not at school - being afraid of engaging and asking questions

Original Date: 2/25/21
Family Support Programs Division