

# STRENGTHEN FAMILIES LOCALLY

3/1/21

## In attendance:

Rebecca Harris, Jennifer Hansen, Camron Peck, Romyana Kudeva, Rowena Pineda, Alexis Heitman, Christina Stretch, Sarah McNew, Sara Clements-Sampson, Andrea Estes, Krista Malyon, Oscar Harris, Annie Murphey, Kimberly Holt, Hannah Rodriguez, Joy Lile

## Important documents:

### SFL onboarding document:

<https://dcyf.box.com/s/pirdixemujfr1hw75gj3bp0enhebq1c4>

### Spokane Project Overview:

<https://dcyf.box.com/s/8929lbze46wh7ycjxnj50v9adpd3z43t>

### DCYF Data Review Meeting (2/1/21):

<https://dcyf.box.com/s/w0sbaocy49qfyi1hbm4hgjvwnxporx>

### Citizen Journalist Workshop materials:

<https://dcyf.box.com/s/61aymm202bgub3gju367ow8zj1x25k63>

### Sensemaker FAQ document: (Check here for social media post/email wording)

<https://dcyf.box.com/s/mqkjyghhd9x6u7ilsz8n5igg0d57nfey>

## Next meeting: 3/15

Topic: Community planning - aligned efforts - continued

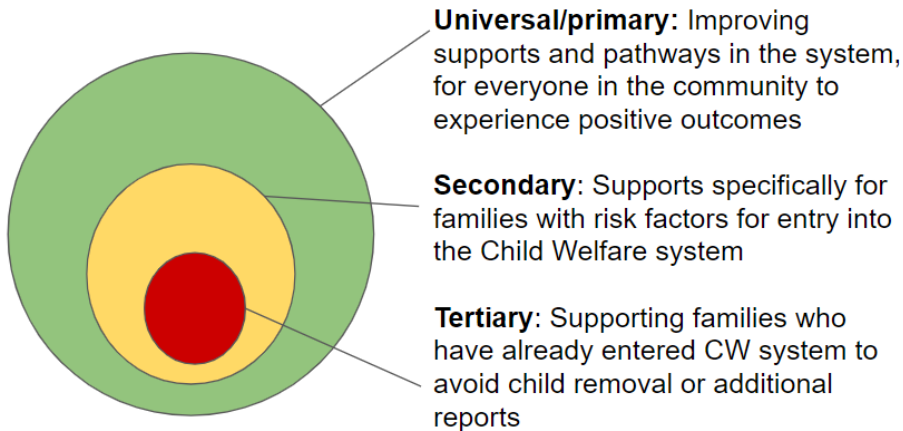
What strategies and objectives are other agencies/collaboratives pursuing related to our goals? How do they overlap with our ideas, and how might we braid strategies together? (Bring your thoughts!)



Washington State Department of  
**CHILDREN, YOUTH & FAMILIES**

What do we mean by Prevention? Reminder:

## What do we mean by prevention?



### Aligned Efforts: Reducing Child Abuse and Foster Care Entry

#### Universal efforts:

- Fatherhood Project - father support groups
- Spokane Public Library Story Times
- Salish tribal school - language and other subjects - youth and adult classes - charter school
- Our Kids Our Business
- Project Pinwheel website hosted by SRHD
- Wellbeing visits, universal developmental screening and referral
- Parents as Teachers and other home visiting programs
- Access to affordable and quality childcare
- Start Early WA / Fair Starts for Kids Act
- The Native Project - medical health clinic - also does cultural/community events
- SRDVC's Coalition and Strategic Plan
- Help Me Grow - referrals for child development needs - Parent Help 123
- Kaleidoscope Play and Learn (library and CME)/virtual play and learn
- Start Early WA / Fair Starts for Kids Act
- WHWF SWAC Report
- Lumen HS (charter school for pregnant/parenting youth)

#### Secondary efforts:

- The ZoNE
  - o Circle of Security classes and Trainings
  - o Community Forums specific to low income area code (CME and Zone Project)
- Vanessa Behan
- ECEAP/ WIC Services

Original Date: 3/1/21  
Family Support Programs Division

- Nurse Family Partnership
- EHF Pregnant and Parenting of Infants Mental Health Initiative
- Handle with Care- looking to expand into other communities/schools
- Quiq- text app specifically for those that qualify for EBT etc.
- 

#### **Tertiary efforts:**

- Maddie's Place - not accepting families yet - program for infants with substance exposure, promoting attachment
- Parents for Parents - peer to peer supports for parents entering system
- Wrap Around Wednesdays YWCA - one-stop shop model for parents to access services, including civil/legal
- DV Perpetrator treatment
- Community Minded Enterprises
  - o Recovery Cafe- for those struggling with substance abuse - parents/caregivers in recovery overcoming substance abuse
  - o Recovery Play and Learn groups - virtual
- Children's Advocacy Center-Partners with Families - multi-disciplinary team
- RISE Mentoring Program in Spokane Public Schools
- Isabella House
- Rising Strong

#### **Identified Gaps/Opportunities:**

- What is going on within the department itself in terms of inequities in the child welfare system? DCYF strategic and equity plan - what is DCYF currently doing to address racial equity? (Joy to bring updates to next meeting)
- Childcare gap and social-emotional learning - 70% of kids are not in childcare before kindergarten - increasing opportunities for SEL
- As people get vaccinated, those "living on the edge" need more supports to recover
- Perinatal Support Group work within DCYF - SFWA - Whatcom
- Q: How trauma-informed are healthcare providers?
  - o Trauma-informed training - going along with Handle With Care - not a uniform expectation in schools - in outlying areas (outside of District 81)
  - o Trauma-informed care training was a common thread through our provider convenings too
  - o Deaconess survey about trauma-informed care - found inconsistencies about how they are carried out