

STRENGTHENING FAMILIES LOCALLY

8/25/20 Clallam Co. Meeting Notes

- 1) Welcome and introductions
 - a) Name
 - b) What identities are you bringing to this work?
 - c) What is one thing you did recently to keep your mind, body, or spirit healthy?
 - d) Nita Lynn (First Step Family Support), Bonnie Schmidt (Nurturing Families Childcare), Shelly Tweeter (Jamestown Sklallam), Leah Harris (Quileute after-school), Ann Penn-Charles (Quileute human services), Minnie Whalen (United Way), Tracey Hosselkus (Prevention Works), Kristi Queen (Sequim school district), Tom (DCYF), Joy (DCYF)
- 2) Updates
 - a) Quick review of Nebraska site visit
 - i) 2 big take-aways, how will we use it?
 - (1) Focused on a specific neighborhood, intensive investment from many different sectors in that neighborhood
 - (2) Multiple layers and levels of parent/community/government engagement in leadership and advocacy - data, funding, community cafes, outreach campaigns, collective impact
 - (3) For more:
<https://dcyf.box.com/s/lrery3pov9b6e41jqd8tvmzydnbedzm4>
- 3) Core principles - What do we need to know/do to work together effectively?
 - a) Review SFL principles
 - i) Approaches will be **strengths-based, culturally appropriate, and inclusive**
 - ii) Mobilization will occur at **multiple levels**, including state government, local government, local non-profits, schools, families, volunteers, tribes, faith communities, etc., and will occur through a **variety of means**
 - iii) We will work to develop **trust** and strengthen shared **values**
 - iv) Our work will strengthen **community organizations**
 - v) Teams will develop a continuum of **information, services, and supports** to strengthen families
 - vi) Communities will **target** interventions for families with **complex and co-occurring risks**
 - b) Community-specific principles or goals
 - i) Build familiarity with children and families – who they are, where they are from
 - ii) Be fluid and responsive to emerging needs and situations



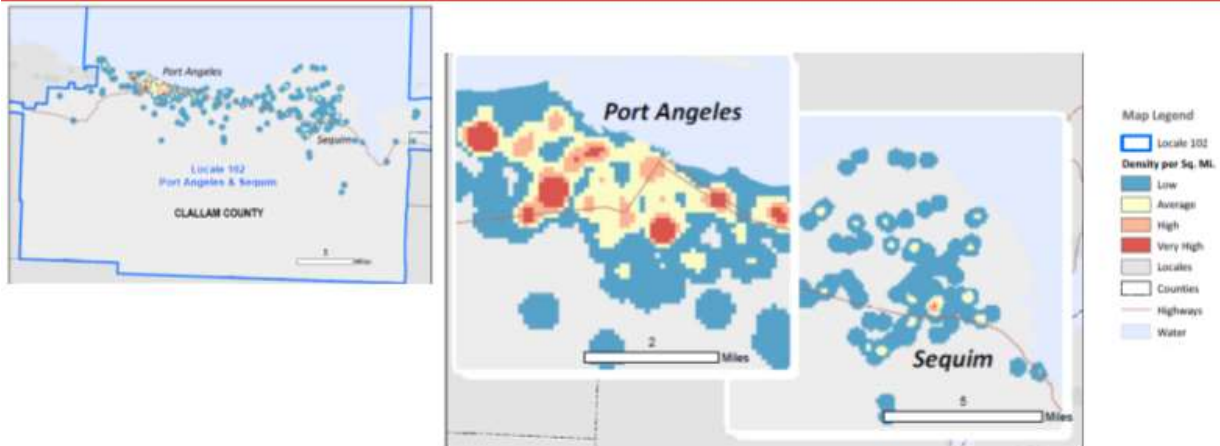
- iii) Commitment to strengthening families' ability to care for their children
 - iv) Keeping the safety of kids at the fore front of our thinking
 - v) Non-territorial –valuing the well-being of the whole effort, rather than competing
- 4) Planning “overview meetings” in each community
 - a) Goal:
 - i) Intro to SFL
 - ii) Start discussion of community strengths/needs
 - iii) Q&A
 - iv) Need for an overt discussion about theory of change - community engagement comes first, then design
 - e) Topics:
 - i) Introductions
 - ii) Project overview
 - iii) Dyad/small group conversations? (sample questions)
 - (1) “What is a hope you have for a child you know in this community?”
 - (2) “You want up tomorrow and child maltreatment is eradicated in this community. What does it look like?”
 - v) Large group conversation and learning
 - vi) Invitation to leadership group, invitation to next meeting (Sensemaker/story building)
 - f) Format:
 - i) Zoom
 - ii) Time?
 - iii) Facilitation/notes?
 - iv) Breakout Rooms?
 - v) Scribes/note taking?
 - a) Crucial questions:
 - i) How to increase parent/community involvement?
 - (1) Is there a place that's appropriate to add a leverage of youth voices? And to also really hear from the people that have the most at stake in the community
 - (2) did something similar once asking for stories and I included an incentive...a \$50 gift card to a local restaurant
 - (3) I received a lot of replies from people who wanted to share their story and I think having a little drawing just added a fun element to it.
 - ii) How to increase equity and voice?
 - iii) How to balance/equalize conversations with service providers and parents?
- 5) Collaboration –Who can we invite to the table, and how to invite them?
 - a) Potential partners/outreach:
 - i) Serenity House

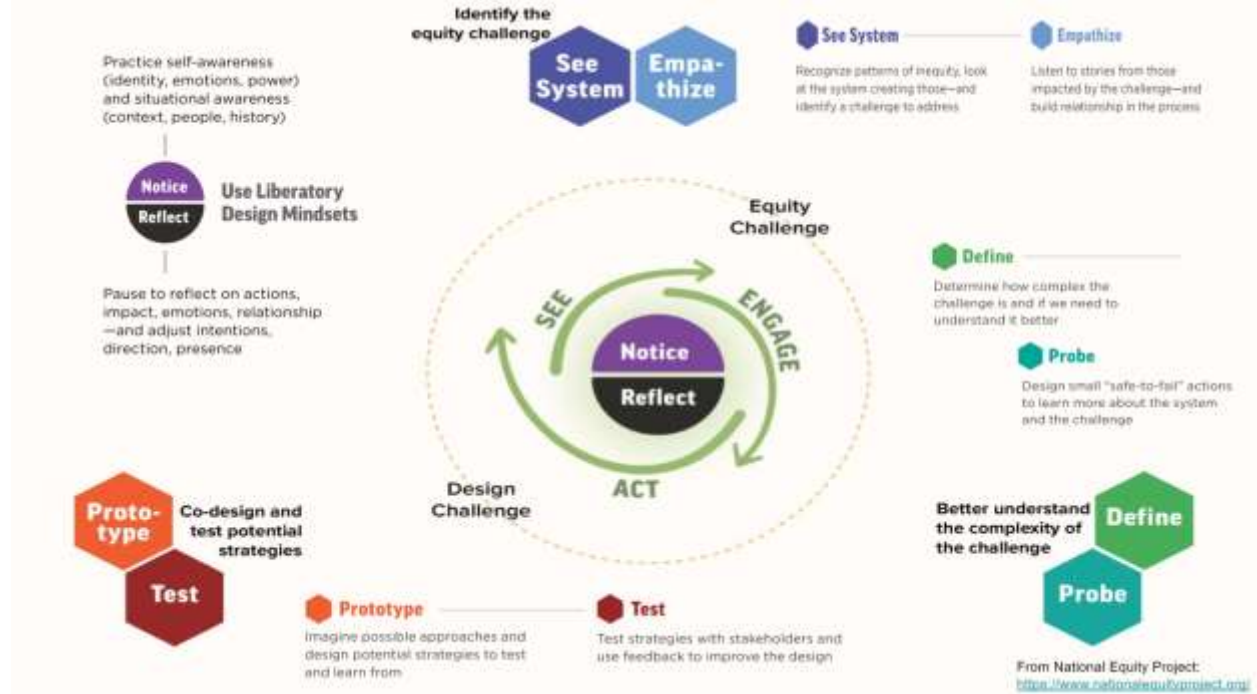
Original Date: August 25, 2020 | Revised Date: September 14, 2020

Family Support Programs Division

- ii) Boys and Girls Club - New Club
 - iii) Churches
 - iv) Preschools
 - v) Grocery Stores
 - vi) Local businesses
 - b) Partner planning tool
 - c) Draft outreach materials – what more is needed?
 - d) Monthly meeting schedule? More/less often
 - i) **Next meeting – 9/8 1:30-3 pm**
- 6) Identified needs/ideas
- a) Is poverty a main concern in the identified areas?
 - b) Jefferson county – Love Box foster care group – wrap-around services
 - c) Youth Services Team in another rural town – staffing for families who are struggling
 - d) <https://www.facebook.com/watch/?v=406171650360223&extid=pHAwv6eelABqEj8W>
 - e) There's a great example of what Tom is talking about in this news story...I will try to find it off of FB too...Here it is...a lovely story :)
 - f) <https://komonews.com/news/erics-heroes/erics-heroes-kingston-community-takes-care-of-neighbors-in-need>

Service Areas – Port Angeles/Sequim





Original Date: August 25, 2020 | Revised Date: September 14, 2020
 Family Support Programs Division