

STRENGTHENING FAMILIES LOCALLY

Port Angeles/Sequim Meeting Notes

12/10/20

In attendance:

Colleen Studinarz, Nita Lynn, Amanda Sanders, Christina Miko, Tracey Hosselkus, Ann Penn-Charles, Joy Lile

Important documents:

Partner Bios: Please add yours!

https://docs.google.com/spreadsheets/d/16CFz6UR3xll1_GB0W9GCgtsIWvEx6bketnYtdz4jjwM/edit?usp=sharing

Notes on Strengths and Needs:

<https://dcyf.box.com/s/pwfcwvrcezt7jg5cahp1ti1sgo86b7o>

Website: <https://www.dcyf.wa.gov/services/child-development-supports/sfwa/sf-locally>

Community values: <https://dcyf.box.com/s/ifo8e95ipniej28yy4mxbr9tg5bjcpbk>

Engagement planning:

https://docs.google.com/document/d/1WqQAJgxlzmHuJChX28KE2Gqc_RQmdNEj5kZeoXvi_2k/edit?usp=sharing

Parent cafes: <https://docs.google.com/document/d/1YzcHlDuoZG8jptbWBFXoovFMa432E8UdJwH-OM3bHQs/edit?usp=sharing>

Provider cafes:

https://docs.google.com/document/d/18lnwkqD7qTXQkcfKlkwwrLP5WJ5yrmYI_NotEvvjNno/edit?usp=sharing

Systems Thinking Workshop Debrief:

What insights or connections did you make to child abuse prevention?

- That society-level events (like Covid) are also an opportunity to re-build systems in ways that work better for people
- Hope - that the frustrating systems can be expanded - can expand the definition of who is "in need" to become healthy - the pandemic has exposed that there is a bigger need that we often assume

Updates: Where are we at in SFL?

Year 1 of community planning in SFL*:

(Year 2 of the grant – first year of community work spans October 2020- October 2021)

1. Convening/visioning
 - Connecting to and inviting partners
 - Building shared *community values* and *goals*
2. Story Building
 - Seeking input from community stakeholders



Washington State Department of
CHILDREN, YOUTH & FAMILIES

*Parent and Provider Cafes
Child Welfare Listening Sessions
Sensemaker*

Community Mapping

Community Data Review

What data is collected in the community?

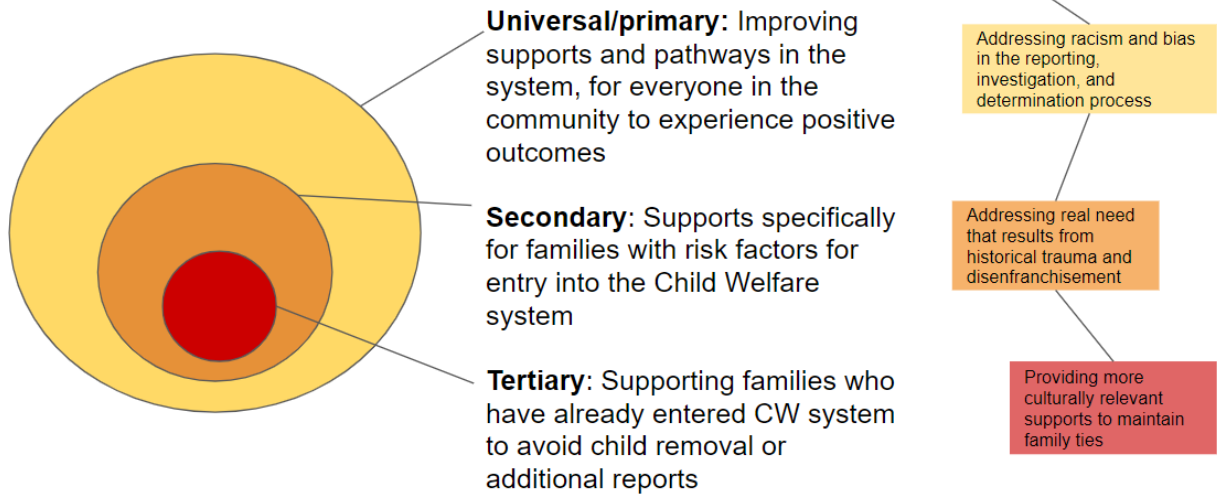
What data is collected in Child Welfare?

3. Community Data Analysis
 - What does the data we have say about community needs?
 - What are we still missing data about?
4. Project coordination
 - What is the **shared governance structure** for SFL?
 - Revisiting shared **values** and **goals**
 - What **entity** is best suited to help guide a community planning effort?
 - What **entity** is best suited to help sustain a collaborative effort?
5. Action Planning
 - How should available funding and resources be prioritized?
 - With support from contracted entity and using **shared governance structure**, community develops **plan** to meet needs and build protective factors
 - Plans** published and ready to inform work
6. Implementation phase
 - What **entity** is best suited to carry out identified projects?
 - Continued **shared governance** and **sustained collaboration**

*Note that this process is iterative, meaning that many steps will be overlapping or revisited. Also, the time frame is flexible and depends on community readiness and needs.

What do we mean by prevention?

What do we mean by prevention?



- Hopefully, child abuse prevention plans will address **all 3 layers** of supports as needed.
- We may need to start with “Secondary” prevention and then expand the focus from there.
- The focus of supports will be based on priorities identified by the community.

Discussion:

- This aligns with the informational flyer about the project: https://www.dcyf.wa.gov/sites/default/files/pubs/FS_0046.pdf
- In the Allegany County example, we could see the following:
 - o Primary: family support structures throughout the county with equality of funding and support
 - o Secondary: Parenting classes and groups, as well as home visiting programs for parents with multiple risk factors
 - o Tertiary: intensive home-visiting and wrap-around team supports for families with the highest needs

Community Data Discussion:

Data source:	Description:	Related need:
Olycap data – Head start, early head start, ECAP	Early learning services	Family risk/protective factors
Lower Elwha head start and early head start	“”	“”
Quileute head start	“”	“”
First step Parents as Teachers HV program	140 parents - 6% were involved with CW services - 46% had 4 or more risk factors 86 families had mental health issues	Protective factors - home visiting/PAT is very high-risk but is achieving low

Original Date: December 11, 2020
Family Support Programs Division

	36 had substance abuse 55% had less than HS education 37 families had housing instability	involvement with CPS
First Step - PCAP program	Served 91 families - 34% have CPS involvement when they come in - upon exit 16% have active involvement	Risk factors - age and education, high ACE scores (6.4 compared to 5.3 state PCAP average)
State BRFSS data	ACEs data	Compare average ACE data between Clallam and state
Health Care Authority - who is eligible for Healthy Kids -	# births in Clallam County - out of 625 born in Clallam County every year, 68% are medicaid eligible - 425 babies born/year living in low income families - * 5 years = roughly 2125 kids total in Clallam county	Born into poverty - risk factor Folks coming from West End into PA to deliver
Boys and Girls Club	Do they collect data?	Economics, family/youth risks for k-12 kids
Law enforcement - city police and county sheriff		K-12 youth and families
Juvenile services - Jody Jacobson - truancy data		K-12 youth and families
Prosecutors and public defenders	What happens to kids when their parents go to jail?	
PA schools		Youth SEL, youth and family factors
Court Improvement Training Academy	2019 - 17% AIAL, 37% non-white representation in the courts	Racial/ethnic breakdown - Native families in CW
PBH? Family treatment centers? OPG, Safe Harbor, and ABHS, Cedar Grove, Reflections, West End Outreach MAT programs - medically assisted treatment - OPHS, BAART Clinic, North Olympic, Olympic Physician's Care, Jamestown Clinic; Sally Heath, Ken Morris, Lillian Ford are our Behavioral Health here in La Push - Quileute Health Clinic is where they work	Family treatment programs	Mental health issues in parents Parents with substance abuse issues - beyond PCAP

Original Date: December 11, 2020
Family Support Programs Division

Additional discussion: Quileute tribe is referring youth to Forks truancy court for low participation in online learning

Collaboration:

Sector/Role	Org.	Name	Who will contact?
Youth development	Boys and Girls Club New Club, adding a preschool	Mary Budkey 360-683-8095	Joy
Transitional housing	Serenity House	Dylan Godsey/Jen Mobley	Jesse
Preschools	Olycap	Tammi Lidster, Olycap Office	Tracey
PA Schools	Parent Navigator	Becca Larson	Joy - Rachel
-	Dry Creek elementary	Laura Lilly - school counselor	Joy - through Rachel
	Parent to Parent - have been through CW		Joy - Tom
Library			
Other state agencies	TANF, DSHS, HUD		
Crescent school district			
Local businesses			
Grocery Stores			
Churches			

Next meeting: 12/16 (State-wide meeting), 1/14/21

Original Date: December 11, 2020
Family Support Programs Division