

# STRENGTHEN FAMILIES LOCALLY

4/7/21

**In attendance:**

Dave Iverson, Molly Corvino, Shannon Selland, Geri Phillips, Amy Keltner, Duston Galusha, Erinn Havig, Missy Cummins, Kim Kreber, Tia Amich, Joy Lile

**Important documents:**

**SFL onboarding document:**

<https://dcyf.box.com/s/pirdixemujfr1hw75gj3bp0enhebg1c4>

**Stevens/Ferry Project Overview:**

<https://dcyf.box.com/s/4iouwydo34s7lckxp89kq3sg93in60as>

**Sensemaker FAQ document:** (Check here for social media post/email wording)

<https://dcyf.box.com/s/mqkijghhd9x6u7ilsz8n5igg0d57nfey>

Reminder: Enter stories about the successes and challenges you are seeing in families!

**New Sensemaker “Share a Story” flyer:**

[https://www.dcyf.wa.gov/sites/default/files/pubs/FS\\_0057.pdf](https://www.dcyf.wa.gov/sites/default/files/pubs/FS_0057.pdf)

**Next meeting:** May 5<sup>th</sup>, 1-3 pm

Topic: Priority Project Planning

3rd Monday of the month, 1-3

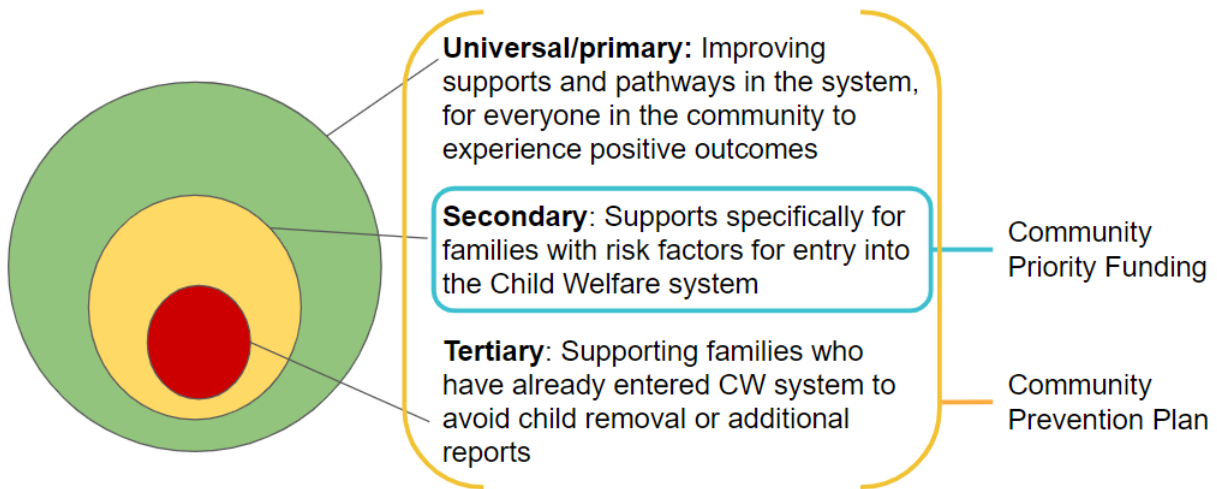
**Visual timeline for 2021-22**

2021		Jan	Feb	Mar	Apr	May	Jun	Jul	Aug	Sep	Oct	Nov	Dec	
Collaboration/ Panning					Priority Project 1 - 2021			Priority Project 2 -2021						
					Community Prevention Planning									
								Strong Community Network Meetings						
Funding	Community Priorities							Project 1: \$20,000 →						
								Project 2: \$20,000 →						
	Facilitation							Strong Community Network Facilitator: \$30,000/community →						
	Parent Engagement								Community Café orientation and support: \$30,000 →					
									Community Café parent leader support: \$30,000 →					
								Parent Engagement Incentives: \$30,000 →						
								Sensemaker (Our Tomorrows): \$50,000/year →						
DCYF Evaluation			CAT Survey											
Community eval. (TBD)														
Reporting					CB report							CB Report		



Washington State Department of  
**CHILDREN, YOUTH & FAMILIES**

2022		Jan	Feb	Mar	Apr	May	Jun	Jul	Aug	Sep	Oct	Nov	Dec	
Collaboration/ Planning		Priority Project 1 - 2022					Priority Project 2 -2022							
		Community Prevention Planning												
		Strong Community Network Meetings												
Funding	Community Priorities	← Project 1: \$20,000					New/Continuing Project 1: \$20,000 →							
		← Project 2: \$20,000					New/Continuing Project 2: \$20,000 →							
	Facilitation	← SCN Facilitator: \$30,000/community					SCN Facilitator: \$15,000/community →							
	Parent Engagement	← C.C. orientation: \$30,000												
		← C.C. parent leaders: \$30,000												
← Parent Engagement: \$30,000														
← Sensemaker (Our Tomorrows): \$50,000/year →														
DCYF Evaluation				CAT Survey										
Community eval. (TBD)														
Reporting					CB report						CB Report			



## Needs/Opportunity Mapping

Opportunity Matrix - laying out what people have said in conversations and discussion:

<https://docs.google.com/spreadsheets/d/1RYzR5McJ6Rg8FkaNwzaFoZIRFyIK9Cqww2KlteC8PE4/edit?usp=sharing>

*Group made a few tweaks in the matrix, mostly around available resources.*

Opportunity Map - understanding connections and relationships between needs:

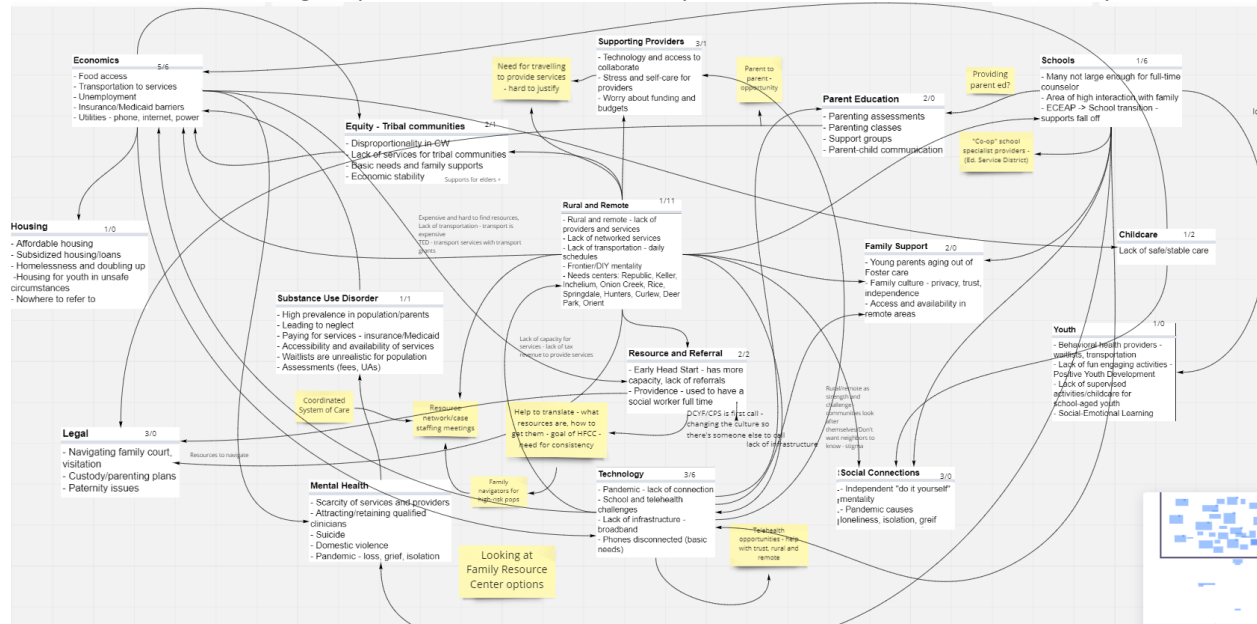
<https://miro.com/welcomeonboard/BIF5JYOFCFXIGRssDNGMr7yJwZRN23toLozUA2YdZj07Gnl4TviOC10xNQCf9nwKr>

Activity: Interrelationship Diagram

<https://asq.org/quality-resources/relations-diagram#:~:text=An%20interrelationship%20diagram%20is%20defined,that%20are%20not%20easily%20recognizable>

Original Date: 4/7/21  
Family Support Programs Division

We created the following map to understand relationships between needs in the community:



For each need, arrows coming in represent things that may influence that need, and arrows going out represent ways that that need may influence others. Arrows are then counted and represented as a ratio (3 arrows in/0 arrows out). “Out” arrows represent a driving factor, while “in” arrows represent a symptom of other needs. This helps us see what the “root causes” are, and the most influential areas to address through our programming.

Note, this activity represents the people who were in the room at the time, acknowledging that it was a small group and some voices were missing.

**The following counts emerged:**

- Rural and Remote (1 in/11 out): Issues related to a spread out and small population, also related to the “frontier” mentality and lack of services. Rural and remote issues cause: difficulties for serve providers, difficulties for tribal members, need to travel long distances for providers, lack of social connections, difficulty accessing family support, challenges with schools, lack of access to technology, low economic status. Rural/remote can be a strength/challenge with social connections and supports – communities look after themselves, but families don’t want neighbors to know their needs because of stigma. Resources are expensive and hard to find because of rural/remote.
- Economics (5 in/6 out): Issues related to accessing basic needs, transportation, and health insurance in the community. Economics cause housing shortage, lack of access to technology, lack of equity for tribal communities, mental health challenges and lack of social/family connections, difficulty accessing resource/referral and childcare. There’s also a lack of tax revenue, so lack of resources to provide services.
- Technology (3/6): A lot of issues with lack of connection to and between providers and parents, lack of infrastructure, but also new opportunities with telehealth building trust and accessibility in rural/remote areas. Technology exacerbates rural and remote areas, causes economic

Original Date: 4/7/21  
 Family Support Programs Division

challenges, challenges providers who are trying to support clients, can help with family supports and parent education.

- Schools (1/6): High school interactions with parents and children, schools are where families get connected to a lot of resources. Schools can support mental health and youth, and drive challenges with technology during the pandemic, they can support social connections, family supports, and parent education.
- Resource and referral (2/2): Contributing to access to legal support, and helping to translate what the resources are.
- Childcare (1/2): Childcare can support or hinder economics and social connections.
- Equity, Tribal Communities (2/1): Lack of equity for tribal communities can exacerbate economic challenges for members.
- Substance use disorder (1/1) Contributing to economics.
- Mental health (2/1): Contributing to economics
- Supporting Providers (3/1): Challenges with travel to provide services
- Areas that were not seen as contributing to other needs: Housing, Legal, Social connections, Family support, Parent education

**Additional supports that were brought up during the meeting (added to the “Opportunity Matrix):**

- Need for providers to travel to provide services – hard to justify traveling a long way for 1 family
- Opportunity to provide parent ed and connect parents through Parent to Parent
- Many schools already have a “Co-op” model for counseling and specialist providers. The Educational Service District helps coordinate this.
- Telehealth opportunities can help build trust and access services for rural and remote families
  - o What if we connected with schools around telehealth access – providing space/laptops to connect to telehealth and service providers?
- Family Resource Centers – DCYF current landscape analysis
- For many providers, DCYF is “first call” and expected to connect them with needed services. How to interrupt this and change the culture so there’s someone else to call?
- Need for more consistency around Resource and Referral – what resources are, how to get them, building trust with families
- Coordinated System of Care connects to resource network/case staffing meetings
- TED – providing Transport services with grants