

STRENGTHEN FAMILIES LOCALLY

4/19/21 – Spokane

In attendance:

Tyna Hagood, Jene Ray, Heather Wallace, Shanda Blunt, Marilyn Nelson, Deb Svoboda, Julie Hinkemeyer, Alexis Heitman, Kristena O’Hara, Cameron Peck, Rummyana Kuveda, Shauna Edwards, Jennifer Hansen, Angie Newman, Leticia Juarez, Megan Badillo, Nakia Arquette, Rebecca Clemens, Krista Maylon, Rebecca Harris, Kimberly Holt, Angie Farmer, Thuy Jenn Nguyen-So, Carmen Pacheco Jones, Shannon Selland, Hannah Rodriguez, Taylor Birdtail, Joy Lile

Important documents:

SFL onboarding document:

<https://dcyf.box.com/s/pirdixemujfr1hw75gj3bp0enhebg1c4>

Spokane Project Overview:

<https://dcyf.box.com/s/8929lbze46wh7ycxnj50v9adpd3z43t>

Sensemaker FAQ document: (Check here for social media post/email wording)

<https://dcyf.box.com/s/mqkijghhd9x6u7ilsz8n5igg0d57nfey>

Reminder: Enter stories about the successes and challenges you are seeing in families!

New Sensemaker “Share a Story” flyer:

https://www.dcyf.wa.gov/sites/default/files/pubs/FS_0057.pdf

Next meeting: May 17th, 1-3 pm

Topic: Priority Project Planning

3rd Monday of the month, 1-3

Visual timeline for 2021-22

2021		Jan	Feb	Mar	Apr	May	Jun	Jul	Aug	Sep	Oct	Nov	Dec	
Collaboration/ Panning					Priority Project 1 - 2021			Priority Project 2 -2021						
					Community Prevention Planning									
									Strong Community Network Meetings					
Funding	Community Priorities										Project 1: \$20,000 →			
											Project 2: \$20,000 →			
	Facilitation										Strong Community Network Facilitator: \$30,000/community →			
	Parent Engagement											Community Café orientation and support: \$30,000 →		
												Community Café parent leader support: \$30,000 →		
											Parent Engagement Incentives: \$30,000 →			
											Sensemaker (Our Tomorrows): \$50,000/year →			

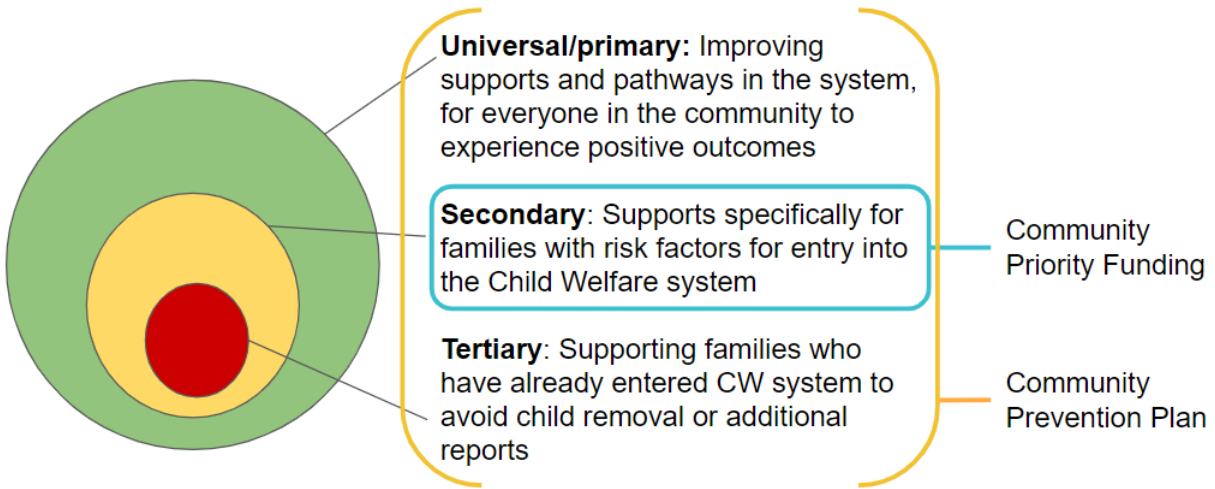


Washington State Department of
CHILDREN, YOUTH & FAMILIES

Original Date: 4/22/21

Family Support Programs Division

2022		Jan	Feb	Mar	Apr	May	Jun	Jul	Aug	Sep	Oct	Nov	Dec	
Collaboration/ Planning		Priority Project 1 - 2022					Priority Project 2 -2022							
		Community Prevention Planning												
		Strong Community Network Meetings												
Funding	Community Priorities	← Project 1: \$20,000					New/Continuing Project 1: \$20,000 →							
		← Project 2: \$20,000								New/Continuing Project 2: \$20,000 →				
	Facilitation	← SCN Facilitator: \$30,000/community					SCN Facilitator: \$15,000/community →							
	Parent Engagement	← C.C. orientation: \$30,000												
		← C.C. parent leaders: \$30,000												
← Parent Engagement: \$30,000														
← Sensemaker (Our Tomorrows): \$50,000/year →														



Reframing Childhood Adversity: Promoting Upstream Approaches

Presented by Kristena O’Hara, Vanessa Behan Crisis Nursery

Slides: <https://dcyf.box.com/s/7jsbq68j3iiiqknte5qcnr2wg064ypz>

Original presentation: <https://www.alliance1.org/web/web/resources/pubs/reframing-childhood-adversity-promoting-upstream-approaches.aspx>

Discussion:

- HOPE - Healthy Outcomes through Positive Experiences - recent symposium - reframing and changing the narratives - “Building Community Resilience” and the “pair of ACEs” - shifting the focus from the family that is experiencing child abuse/neglect towards the community
- Coming with hope, not just a problem/issue of concern - lightening the load on the parents
- Outcome of childhood trauma is early death - what we are doing is really important
 - The messaging is “streamlined” across the country - how can we jump on board with that
 - NEAR sciences - Neurodevelopment, Epigenetics, ACEs, Resilience has been framing for other community initiatives focused on this work

Original Date: 4/22/21
Family Support Programs Division

Needs/Opportunity Mapping

Opportunity Matrix - laying out what people have said in conversations and discussion:

<https://docs.google.com/spreadsheets/d/1iCg8XkeM7RXaDhfH1iKL5kU3Rv5nWkrWfp0wAixkC4/edit?usp=sharing>

Open for commenting

Group made a few tweaks in the matrix, mostly around available resources.

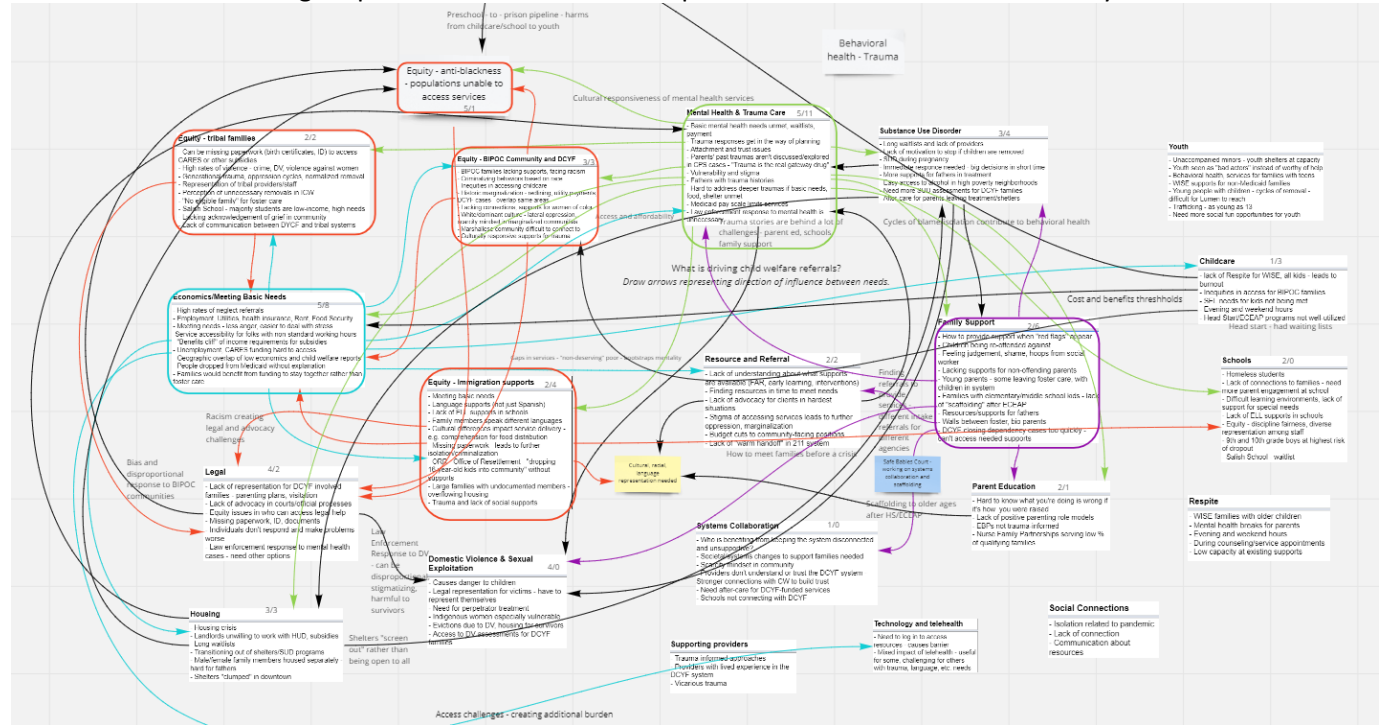
Opportunity Map - understanding connections and relationships between needs:

<https://miro.com/welcomeonboard/24SizYZ78DKKIX2Yvy255DcHyeYljhrChIK4azGluac3PmYh9f2BfNJWXXf5ZpXS>

Activity: Interrelationship Diagram

<https://asq.org/quality-resources/relations-diagram#:~:text=An%20interrelationship%20diagram%20is%20defined,that%20are%20not%20easily%20recognizable>

We created the following map to understand relationships between needs in the community:



For each need, arrows coming in represent things that may influence that need, and arrows going out represent ways that that need may influence others. Arrows are then counted and represented as a ratio (e.g. 3 arrows in/0 arrows out). “Out” arrows represent a driving factor, while “in” arrows represent a symptom of other needs. This helps us see what the “root causes” are, and the most influential areas to address through our programming.

Note, this activity represents the people who were in the room at the time, acknowledging that it was a small group and some voices were missing.

The following counts emerged:

Original Date: 4/22/21
Family Support Programs Division

- **Racial and Cultural Equity:** 12 in/10 out (arrows counted collectively) Influencing economic barriers, legal barriers, schools
 - Also contributing to housing and trauma-related needs
 - Anti-Black racism was called out as a driving concern, alongside needs for language and immigration supports and supports for Tribal families
 - Anti-Black racism creates a barrier to services and access for families
 - Connections to legal barriers: bias and disproportional response to BIPOC communities due to racism
 - Disproportional outcomes driven by preschool-prison pipelines, connecting to schools, childcare
 - Cultural responsiveness of mental health services can be a challenge for BIPOC families
 - Need: Centering folks with lived experience in the process - lots of service providers at the table
 - Equity-focused listening session - inviting folks specifically from BIPOC serving families - there hasn't been an open invite historically
 - Providing stipends and contracting for equity
- **Mental Health & Trauma Care:** 5 in, 11 out. Influencing SUD, economics, racial equity, anti-Black racism, equity for tribal families, family supports, schools, immigration, housing
 - Trauma stories are behind a lot of challenges that families face
 - Cultural responsiveness of mental health services
 - Cycles of blame and isolation contribute to behavioral health
 - Lack of access and affordability of services
- **Economics/Meeting Basic Needs:** 5 in, 8 out. Influencing equity for Black, Tribal, and Immigrant communities, housing, technology/telehealth, resource and referral, childcare, mental health
 - Access and affordability is a barrier to mental health supports
 - There are gaps in services for some because of “non-deserving poor” stigma and “bootstraps mentality” – where services are located and who they reach out to (also relates to racism)
 - Inter-related with childcare, due to costs and benefits thresholds – the “benefits cliff” for those just over poverty line
 - Telehealth – adding additional barriers because of lack of access to technology
- **Family Supports:** 2 in, 6 out. Influencing SUD, Mental health/trauma, resource and referral, parent education, DV/sexual exploitation, systems collaboration
 - Needing “scaffolding” after ECEAP
 - Different intake processes for different agencies creates challenges
- **Substance use disorder:** 3 in, 4 out. Influencing mental health/trauma (cyclical), housing, family supports, domestic violence and sexual exploitation
 - Cycles of blame, stigma, isolation contributing to behavioral health
- **Housing:** 3 in, 3 out
 - Influenced by mental health, SUD, economics
 - Influencing anti-Black racism by creating geographic barriers, Mental Health and SUD
 - Shelters “screen out” rather than being open to all – housing first models
- **Domestic Violence and Sexual Assault:** 4 in, 0 out
 - Law enforcement’s response to DV can be disproportionate, stigmatizing, and harmful to survivors
- **Childcare:** 1 in, 3 out – influencing equity through racism, economics
 - “School to prison pipeline” and anti-Black racism appearing in early childhood education
 - High cost of childcare and benefits thresholds
- **Resource and Referral:** 2 in, 2 out. Influencing mental health, Equity.

Original Date: 4/22/21
Family Support Programs Division

- How to meet families before there is a crisis?
- **Parent Education:** 2 in, 1 out
 - Support for idea of providing “scaffolding” from ECEAP through older ages of youth
 - Need for racial/cultural/language representation in parent ed.
- **Schools:** 2 in, 0 out
- **Technology and Telehealth:** 1 in, 0 out
- **Systems Collaboration:** 1 in, 0 out
- **No connections: Youth, Supporting Providers, Social connections, Respite**

Comments about resources (shared in Chat)

- Safe Babies Court is working on Resource and Referral, “scaffolding” supports for folks with older children

Additional supports that were brought up during the meeting (added to the “Opportunity Matrix):

- Cultural, racial, language representation is needed