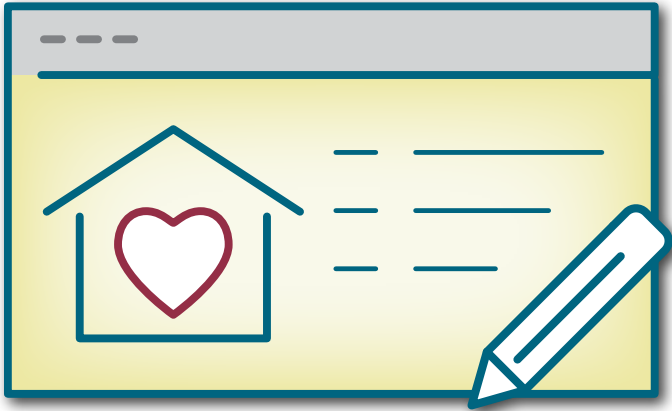


Program Profile



What is the Program Profile?



Program Profile is a facilitated self-assessment process that gathers data from leadership, family, and staff interviews to create a data report that sets the stage for quality improvement activities over the three-year quality recognition cycle.

Why is the Program Profile important?

Program Profile is important because it helps identify strengths and opportunities for growth to improve quality by generating a strength-based report intended to:

- **Provide** data to kick off each three-year quality recognition cycle.
- **Share** feedback from children's families to promote family engagement.
- **Support** programs and coaches with continuous quality improvement.

1. SMART - Specific, Measurable, Attainable, Relevant, Timely.

What happens during Program Profile?

Interviews are completed independently in an online platform called CECl (formerly Coaching Companion) or facilitated by our partners, Cultivate Learning, over phone or video call. Interviews include:

Child Care Center/ECEAP/Head Start

- Director
- Teachers – at least one teacher from each learning environment
- Families – no minimum required

Family Home Child Care

- Owner
- Teachers (if applicable) – at least one teacher from each learning environment
- Families – no minimum required

What happens next?

Coaching is available to support continuous quality improvement work around specific strengths, priorities, and identity. Coaching options may include:

- Using Program Profile report with a coach to identify areas of focus.
- Creating improvement plans, SMART¹ goals, and action plans based around provider philosophy, values, and interests.
- Engaging in a coaching cycle that matches the programs specific needs.

If you would like copies of this document in an alternative format or language, please contact DCYF Constituent Relations (1-800-723-4831 | 360-902-8060, ConstRelations@dcyf.wa.gov).

DCYF PUBLICATION EPS_0063 (08-2021)



Washington State Department of
CHILDREN, YOUTH & FAMILIES