

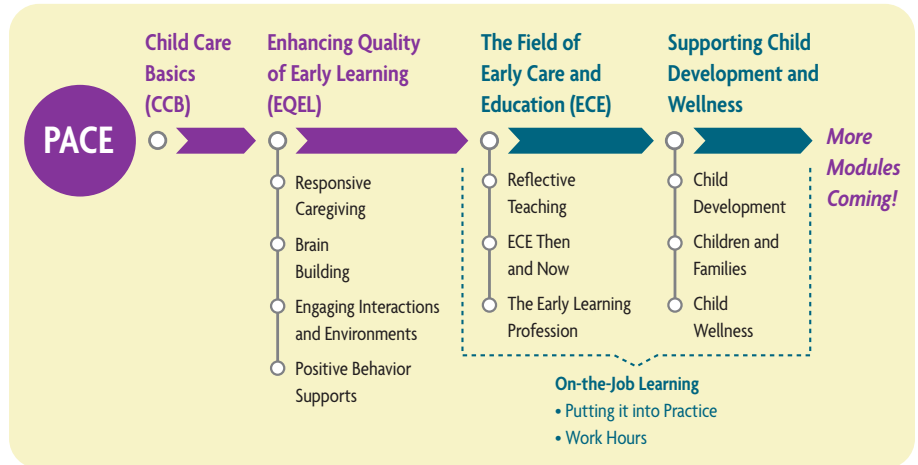
PACE – Provider Access to a Community Equivalent

Go at Your Own PACE!

PACE is the training option to meet the licensing education requirement for an initial and short certificate. This includes family home licensees, lead teachers, and assistant teachers.

What’s Included in PACE?

PACE gives you a jump start by building from your required training for licensing qualifications – Child Care Basics and Enhancing Quality of Early Learning – and your work hours.



How Does PACE Work?

1. Child Care Basics..... 30 hours
2. Enhancing Quality of Early Learning 20 hours
3. Additional PACE Modules include:
 - In-Service Training..... 40 hours
 - On-the-Job Learning..... 30 hours

This content matches the learning objectives for the Washington State Initial Certificate. DCYF is working with SBCTC to identify a pathway that builds from PACE completion into a certificate or degree program. More PACE Modules are coming soon for the Short Certificate.

Go to <https://www.dcyf.wa.gov/services/early-learning-providers/qualifications/child-care-providers/education-equivalents/pace> to learn more about PACE or contact merit@dcyf.wa.gov to speak with a career navigator to learn about your options and which one is right for you.

What is On-the-Job Learning?

Putting it into Practice

For each session you will:

- Apply learning from training by planning and trying out an activity on the job.
- Reflect on the activity and how it went.
- Document the experience to share with the trainer about your learning.

Work Hours

You will log your current early childhood work experience to share with your trainer.



Washington State Department of
CHILDREN, YOUTH & FAMILIES

What Will I Learn With PACE?

PACE Part 1: The Field of Early Care and Education (ECE) consists of 20 training hours and 8 on-the-job learning hours.

Module	Session	On-the-The Job Learning
Reflective Teaching: 5 hours	Reflective Teaching Strategies: 2 hours	None
	Productive Reflection: 1.5 hours	
	Goal Setting: 1.5 hours	
ECE Then and Now: 9 hours	The History of ECE: 3 hours	One Activity: 4 hours
	ECE Settings: 3 hours	
	ECE Policy and Advocacy: 3 hours	
The Early Learning Profession: 6 hours	Educator Development: 3 hours	One Activity: 4 hours
	Values and Ethics: 3 hours	

PACE Part 2: Supporting Child Development and Wellness consists of 20 training hours and 12 on-the-job learning hours.

Module	Session	On-the-The Job Learning
Child Development: 6 hours	Developmentally Appropriate Practice: 3 hours	One Activity: 4 hours
	Play and Curriculum: 3 hours	
Children & Families: 8 hours	Supporting Behavior: 3 hours	One Activity: 4 hours
	Child Outcomes: 2 hours	
	Engaging Families: 3 hours	
Child Wellness: 6 hours	Health and Safety: 3 hours	One Activity: 4 hours
	Promoting Wellness: 3 hours	



If you would like copies of this document in an alternative format or language, please contact DCYF Constituent Relations (1-800-723-4831 | 360-902-8060, ConstRelations@dcyf.wa.gov).