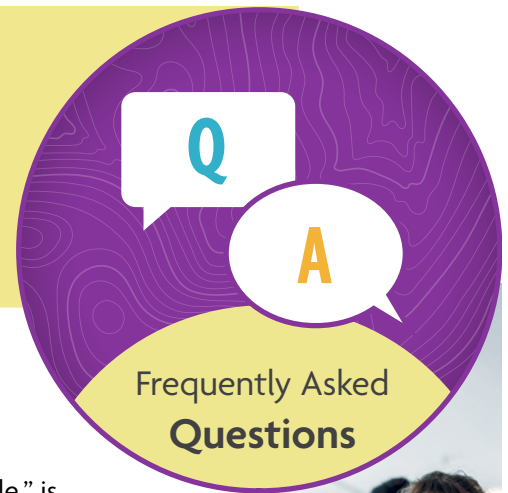


Community Assisted Reentry

This document is intended to provide answers to some of the frequently asked questions of **Juvenile Rehabilitation (JR) clients**.



Q

WHAT IS COMMUNITY ASSISTED REENTRY?

A

Community Assisted Reentry (CAR), formerly known as “No Parole,” is a pathway for young people to receive the community supports needed for successful transition home. Participation in CAR services is voluntary and is available for 12 months post release from a JR Residential sentence.

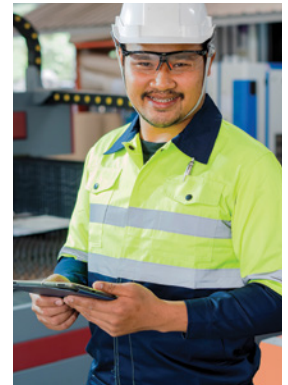


Q

ARE ALL YOUNG PEOPLE RELEASING FROM A JR RESIDENTIAL PROGRAM ELIGIBLE FOR CAR SERVICES?

A

No. There are certain circumstances where young people are not eligible for services through Community Assisted Reentry. Those with a parole obligation to JR, a probation obligation to Department of Corrections or a county juvenile or adult court, or plan to move out of state will not be eligible.

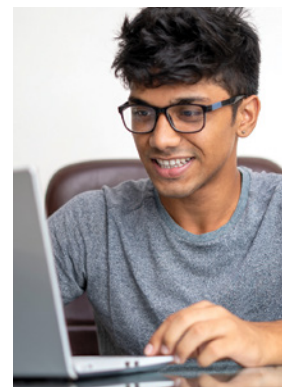


Q

WHAT TYPES OF SERVICES AND SUPPORT MAY I BE CONNECTED TO?

A

- Housing support
- Behavioral, physical, and mental health
- Independent living skills
- Employment/vocation
- Education
- Mentorship
- Family support
- Wellness/peer support
- Legal advocacy
- Safety/violence prevention
- Community connections
- Other supports that will assist you with a successful reentry back to your community.



Washington State Department of
CHILDREN, YOUTH & FAMILIES

**Q****HOW WILL I KNOW WHAT TYPES OF SUPPORT I MAY RECEIVE?****A**

Services will be determined by your most recent Future Plan. It is very important to work on your Future Plan throughout your residential stay and especially as you prepare to release. Regional staff will use the information outlined in your plan to seek services to meet your highest needs and goals.

Q**WILL ANYONE FROM MY REGION CONTACT ME WHILE I'M SERVING MY SENTENCE?****A**

Yes. You will be assigned a CAR Specialist who will contact you during your residential stay. Your specialist will participate in your Future Planing Meeting to assist in your transition plans. At that time, you will learn more about CAR services and available resources to meet your individual needs.

Q**HOW DO I KNOW WHICH REGION TO CONTACT IF I NEED SUPPORT?****A**

Washington is divided into six separate regions. Your assigned Region is dependent on which county you will be releasing to. (See contact chart on page 4)

Q**WHEN WILL I BE ABLE TO ACCESS THESE COMMUNITY ASSISTED REENTRY?****A**

It's important to work with your Residential Counselor on your Future Plan and fully participate in you Future Planing Meeting prior to your release, this helps your CAR Specialist get an idea of what services are needed. Eligibility to participate in this service starts on day one of your release from your residential sentence.

**Q****HOW LONG WILL JR PROVIDE ME WITH COMMUNITY-BASED SERVICES?****A**

You will have the opportunity to participate in services and receive support for up to 12 months starting the day of your JR release from your residential sentence.

Q**CAN I ACCESS THESE SERVICES AT ANY TIME DURING THE 12 MONTHS AFTER I HAVE BEEN RELEASED FROM JR?****A**

Yes. For young people eligible for CAR, support may be available during the first 12 months after your release. You will no longer be eligible if during your 12 month CAR period you are assigned probation or parole.

Q**WHAT HAPPENS IF I MOVE OUT OF STATE UPON MY RELEASE OR DURING THE 12 MONTHS I'M ELIGIBLE FOR CAR?****A**

CAR services are only available for you within the state of Washington. If you return to the state within the 12 months after your release and feel you need support, CAR services can still be accessed. You will need to contact your regional office and notify them of your desire to reengage in the support we can offer.

Q**WHAT HAPPENS IF I DECLINE CAR SUPPORT OR DECIDE I NO LONGER WANT TO PARTICIPATE IN SERVICES?****A**

CAR participation is voluntary. You are not required to participate or remain in any services. If you decide you no longer want to participate, please inform regional staff. Should you later decide you want services after declining or discontinuing, you may reengage in support, as long as it's within your 12 month eligibility period.

Q**HOW WILL COMMUNITY-BASED SERVICES ALIGN WITH DCYF'S EQUITY AND SOCIAL JUSTICE FOCUS?****A**

JR will prioritize identifying and building a capacity of community-based partnerships that reflect the young people being served as it relates to race, ethnicity, sexual orientation, gender identity, and expression.





Q

WHERE CAN I FIND MORE INFORMATION ABOUT COMMUNITY SUPPORT FOR ALL YOUTH SERVICES?

A

Download *JR Community Support for All Youth Fact Sheet* (JR_0043) available online at www.dcyf.wa.gov/publications-library/JR_0043.

WILLIAM CHAPIN

Parole Aftercare and CAR Consultant
(509) 713-0360
william.chapin@dcyf.wa.gov

REGIONS	COUNTIES	REGIONAL OFFICE	PHONE
1	Adams, Asotin, Chelan, Douglas, Ferry, Garfield, Grant, Lincoln, Okanogan, Pend Oreille, Spokane, Stevens, and Whitman	SPOKANE	(509) 505-5470
2	Benton, Columbia, Franklin, Kittitas, Klickitat, Walla Walla, and Yakima	YAKIMA	(509) 225-6530
3	Island, San Juan, Skagit, Snohomish, and Whatcom	EVERETT	(425) 740-6590
4	King County	SEATTLE	(206) 639-6000
5	Clallam, Jefferson, Kitsap, and Pierce	TACOMA	(253) 476-7100
6	Thurston, Mason, Grays Harbor, Pacific, Wahkiakum, Cowlitz, Lewis, Clark, and Skamania	LACEY	(360) 407-3200