

Community Support for All Youth

This document is intended to provide answers to some of the frequently asked questions of **Juvenile Rehabilitation (JR) clients**.



Q

WHAT IS COMMUNITY SUPPORT FOR ALL YOUTH?

A

Community Support for All Youth (CSAY) offers community-based services to young people once they are released to the community, including transferring to a community facility or to Community Transition Services. These services will provide support to help with your success as you reenter the community.

Q

WHO WILL BE OFFERED SUPPORT SERVICES?

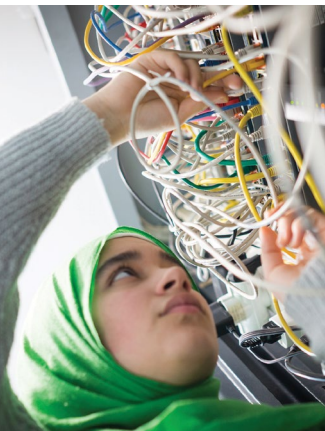
A

Most young people in Juvenile Rehabilitation will be eligible for CSAY services. If eligible, young people may be offered CSAY services through one of the four pathways:

- **Community Aftercare with Parole:** If you are assigned to a mandatory parole obligation.
- **Community Assisted Reentry (CAR):** If you do not have mandatory parole aftercare, county probation, DOC supervision, or moving to another state.
- **Community Facility:** If you transfer to a community facility.
- **Community Transition Services (CTS):** If you are eligible to serve your remaining sentence in your home community for up to the last 18 months of your sentence on electronic monitoring.



Washington State Department of
CHILDREN, YOUTH & FAMILIES

**Q**

WHAT IS COMMUNITY AFTERCARE WITH PAROLE?

A

Community Aftercare with Parole occurs through a relational and strengths-focused model that recognizes the vital role of family and natural supports in helping young people reenter their communities. This service is an important step in successful community reentry for the young people who qualify. For more information on RCW 13.40.210, go to <https://app.leg.wa.gov/RCW/default.aspx?cite=13.40.210> and Parole Aftercare Legislative Fact Sheet www.dcyf.wa.gov/sites/default/files/pubs/JR_0025.pdf.

Q

WHAT IS COMMUNITY ASSISTED REENTRY?

A

Community Assisted Reentry (CAR) is the pathway where young people without an obligation to Community Aftercare with Parole, county probation, DOC supervision, or moving to another state, can receive critical community-based supports necessary for their successful transition. Participation in CAR services is voluntary and is available for up to 12 months post-release from a residential sentence.

Q

WHAT IS COMMUNITY FACILITY PLACEMENT?

A

JR has eight minimum security community facilities that provide a step-down opportunity for young people to engage in an array of learning, growth, employment, and reentry activities in a community setting, guided by staff support, prior to their release to the community. For more information about these facilities, go to www.dcyf.wa.gov/services/juvenile-rehabilitation/residential-facilities. While in residence at the community facility, young people may be offered the opportunity to take advantage of CSAY services.

Q

WHAT ARE COMMUNITY TRANSITION SERVICES?

A

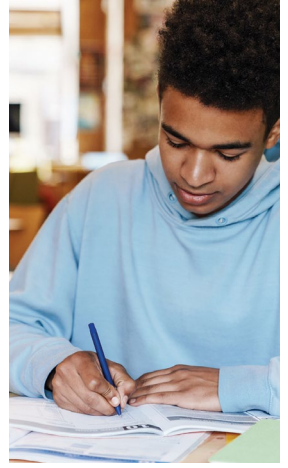
CTS provides a least restrictive option to residential confinement for eligible JR young people. CTS offers therapeutic supports and connections to services along with electronic monitoring in the community while completing your legal sentence obligation. Young people participating in CTS will be required to participate in community-based services. Read the *Community Transition Services* (JR_0038) fact sheet available online at www.dcyf.wa.gov/publications-library/JR_0038 and the *CTS Handbook* (JR_0081) www.dcyf.wa.gov/sites/default/files/pubs/JR_0081.pdf for more information.

Q

WHAT TYPES OF SERVICES MAY I BE OFFERED?

A

- Housing support
- Behavioral, physical, and mental health
- Independent living skills
- Employment/vocation
- Education
- Mentorship
- Family support
- Wellness/peer support
- Legal advocacy
- Safety/violence prevention
- Community connections
- Other supports that will assist with the goal of a successful reentry and transition back to your community

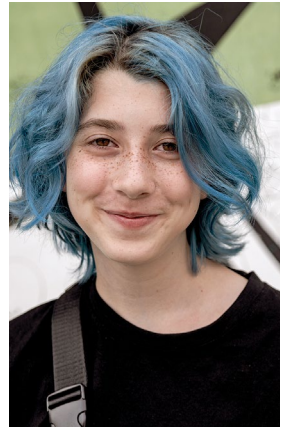


Q

HOW WILL IT BE DETERMINED WHAT SERVICES JR MAY PROVIDE TO ASSIST WITH MY SPECIFIC NEEDS?

A

Services will be determined by your most recent IDEA (Integrated Developmental Evaluation and Assessment) and Future Plan while in residence. Regional staff will use the outcomes of that assessment to seek services to meet your highest needs, with the primary focus being stabilization. Additional needs will be based on time, resources, and self reporting if your situation changes.

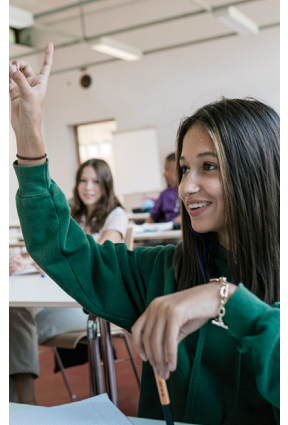


Q

HOW LONG WILL JR PROVIDE ME WITH SERVICES?

A

- **Community Aftercare with Parole:** You may be offered services during the length of your parole obligations which ranges from six to 36 months.
- **Community Assisted Reentry (CAR):** You may be offered the opportunity to participate in voluntary services for up to 12 months starting the day of your release.
- **Community Facility:** You may be offered services while in residence at a community facility.
- **Community Transition Services:** Services are available for up to 18 months while completing your sentence in the community on electronic monitoring. Upon completion of CTS, you may be able to receive additional services while on Community Aftercare with Parole or through CAR.

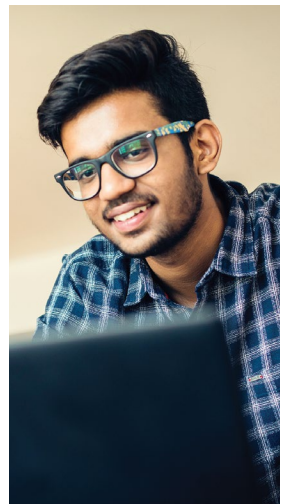


Q

WILL I BE SUPERVISED WHILE RECEIVING SERVICES?

A

Yes, but only while participating in CTS or on Community Aftercare with Parole. If you are receiving services under Community Assisted Reentry, you will not be supervised, as your participation is voluntary. All services you receive will be tracked and monitored.

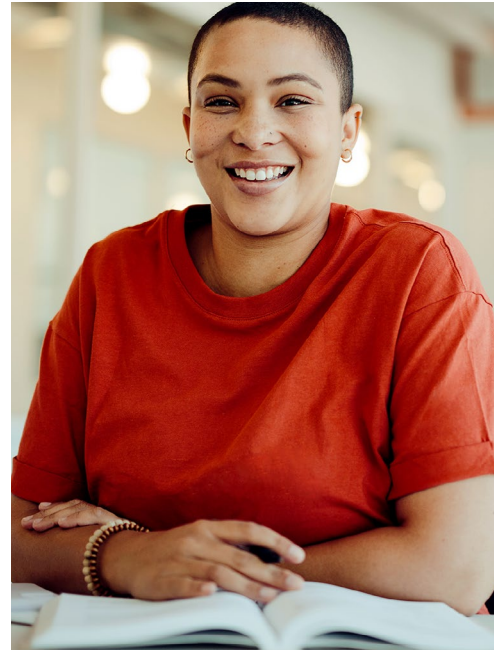


Q

WHEN WILL I BE ABLE TO ACCESS THESE SERVICES?

A

It is our hope that you will be linked to services prior to your release into the community or if transferring to a community facility or to Community Transition Services. Upon release, you will have access to available services in your area.



Q

HOW WILL CSAY'S SERVICES ALIGN WITH DCYF'S EQUITY AND SOCIAL JUSTICE FOCUS?

A

JR will prioritize identifying and building a capacity of community-based partnerships that reflect the young people being served as it relates to race, ethnicity, sexual orientation, gender identity, and expression.

Q

WHAT IF I FEEL LIKE I DON'T NEED SERVICES OFFERED FROM CSAY?

A

- **Community Aftercare with Parole:** Your participation in community based services and following parole conditions are mandatory.
- **CAR:** Participation is voluntary. If you decide you no longer want any offered service, please inform your regional staff.
- **CF:** You will need to address this concern with your assigned residential counselor in the community facility.
- **CTS:** If you are participating in CTS, you will be required to participate in community-based services and follow all CTS conditions established by your individual JR Community Counselor.



Additional information about the pathway to accessing services can be found here:

LAURESA HART

Community Transitions Administrator
(360) 481-9465
lauresa.hart@dcyf.wa.gov

WILLIAM CHAPIN

Parole Aftercare Consultant
(509) 713-0360
william.chapin@dcyf.wa.gov

JR Community Support for All Youth Fact Sheet (JR_0043): www.dcyf.wa.gov/publications-library/JR_0043